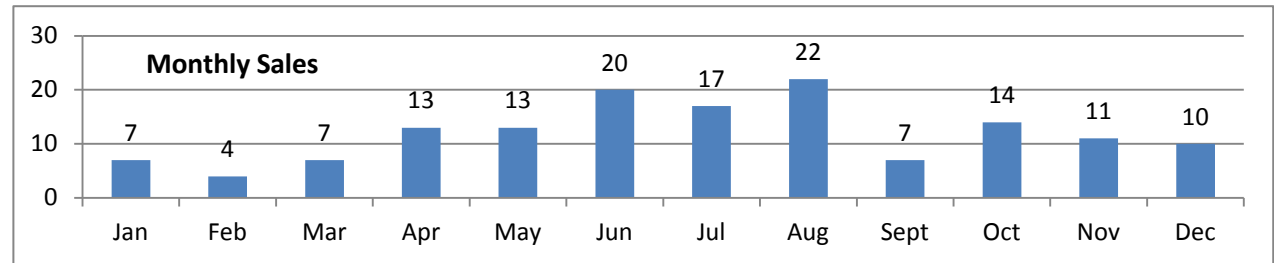
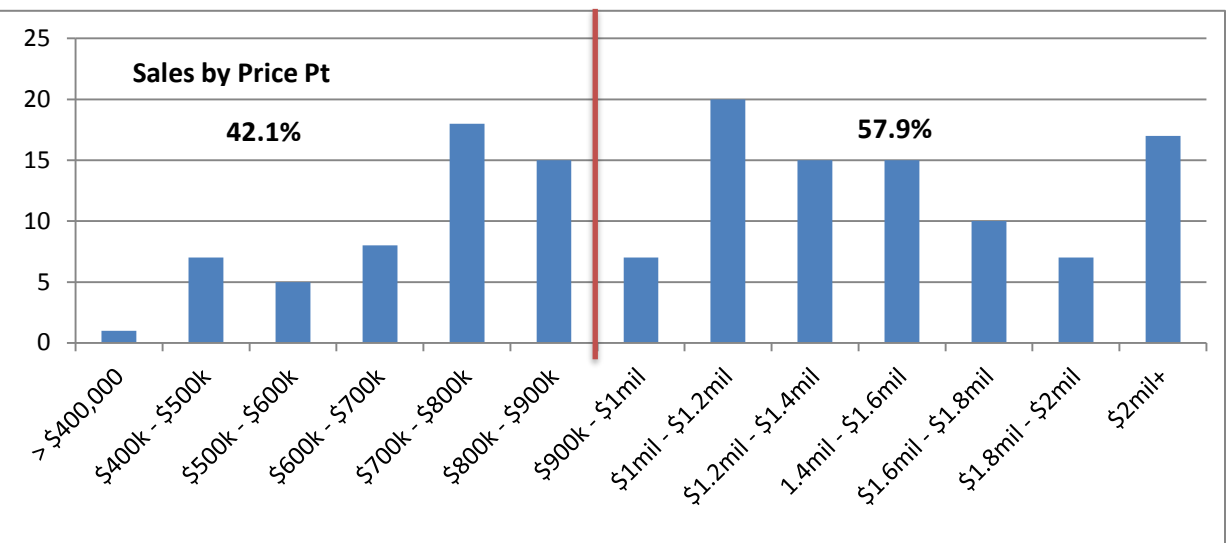


	1st Qtr			2nd Qtr			3rd Qtr			4th Qtr			Totals	
	Jan	Feb	Mar	Apr	May	Jun	Jul	Aug	Sept	Oct	Nov	Dec		
<b>Residential</b>														
Mo:	7	4	7	13	13	20	17	22	7	14	11	10	145	
2 Bedrooms	3	0	0	1	0	0	0	1	0	0	0	1		
3 Bedrooms	13	3	0	0	3	1	1	3	0	1	0	1		
4 Bedrooms	53	3	1	3	4	6	4	6	3	6	6	3		
5 Bedrooms	61	1	2	3	7	4	9	11	12	3	5	3	1	
6 Bedrooms	14	0	1	1	1	0	2	1	0	1	2	2	3	
7 Bedrooms +	1	0	0	0	0	0	0	0	0	0	0	0	1	
Mo:	7	4	7	13	14	20	17	22	7	14	11	9	145	
> \$400,000	1	0	0	0	0	0	0	0	0	1	0	0	} 8	
\$400k - \$500k	7	1	0	0	0	2	0	0	2	1	0	0		
\$500k - \$600k	5	1	0	1	0	1	0	0	2	0	0	0	} 53	
\$600k - \$700k	8	0	0	0	0	1	0	1	3	2	0	1		0
\$700k - \$800k	18	1	1	1	1	3	2	2	1	2	1	2		
\$800k - \$900k	15	1	0	0	2	4	2	1	2	0	1	2		
\$900k - \$1mil	7	0	0	1	1	1	0	2	0	0	2	0	} 84	
\$1mil - \$1.2mil	20	1	0	1	1	2	5	1	1	0	3	4		1
\$1.2mil - \$1.4mil	15	1	1	1	2	0	2	1	3	0	2	0		2
\$1.4mil - \$1.6mil	15	0	0	0	1	1	2	6	2	1	1	1		0
\$1.6mil - \$1.8mil	10	0	0	1	3	0	3	0	2	0	0	1		0
\$1.8mil - \$2mil	7	0	1	0	1	0	0	1	2	0	2	0		0
\$2mil+	17	1	1	1	1	1	3	2	1	2	1	1	2	
Mo:	7	4	7	13	14	20	17	22	7	14	11	9	145	
>2000'sf <b>Finished</b>	3	0	0	0	0	1	0	0	1	0	1	0		
2001'sf - 2500'sf	24	5	0	1	0	2	1	0	5	2	3	3	2	
2501'sf - 3000'sf	27	0	1	2	5	3	5	2	6	0	2	0	1	
3001'sf - 3500'sf	26	1	0	2	2	6	2	4	2	2	1	2	2	
3501'sf - 4000'sf	19	0	1	0	1	0	4	5	3	0	2	2	1	
4001'sf - 4500'sf	20	0	0	1	3	1	3	4	4	0	2	1	1	
4501'sf - 5000'sf	8	0	1	1	0	0	2	1	1	1	0	0	1	
5001'sf - 5500'sf	9	0	0	0	2	0	1	0	1	1	3	1	0	
5501'sf - 6000'sf	5	0	1	0	0	0	1	1	0	0	1	0	1	
6001'sf - 6500'sf	1	0	0	0	0	0	1	0	0	0	0	0	0	
6500'sf - 7000'sf	0	0	0	0	0	0	0	0	0	0	0	0	0	
7001'sf +	3	1	0	0	0	1	0	0	0	0	0	1		
Qtr Totals:		18			47			46			34			



	Q1	Q2	Q3	Q4	YTD
Median DOM	58	18	38	94	34
Median \$	\$1,137,500	\$1,100,000	\$1,168,750	\$1,072,500	\$1,100,000
Mdn \$/Sf	\$348.83	\$250.30	\$316.26	\$233.42	\$300.93



42.1%

57.9%